

## Installation Instructions CellaVision Software 7.0.1 Patch Version 2

This patch is intended to be installed on the following products, running CellaVision DM Software version 7.0.1:

- CellaVision® DM1200
- CellaVision® DM9600
- CellaVision® DC-1
- Automated Digital Cell Morphology Analyzer DI-60
- CellaVision® Remote Review Software
- DI Remote Review Software
- CellaVision® Server Software

### Changes Included in Patch

#### CellaVision® DM/DC Analyzers, DI-60 and Server Software

- An issue where sending results to LIS could stop (requiring a system computer or server restart) due to heavy load of the database has been solved.
- An issue where archived slides could not be opened if the archive had been moved to a folder with no write permission has been solved.
- An issue with using the 10<sup>th</sup> user defined BF WBC (USRBFWBC10) has been solved.
- It is now possible to configure the LIS interface to use code page 874 (Thai).
- It is now possible to hide the cell class name printed in the image when utilizing the feature *LIS images export* by setting the new registry value *ShowCellName* to "0".
- An issue where the nucleus color in rare cases could appear to be different compared to similar cells on the same slide has been solved.
- An issue which could affect the responsiveness of the Database View has been solved.
- An issue that it could take a long time to delete a DC-1 slide has been solved.

#### CellaVision® Remote Review Software and DI Remote Review Software

- An issue with accessing the USB hardware key has been solved.

## Download

1. Go to [www.cellavision.com](http://www.cellavision.com) and log on to the **For Partners** section. You'll find the patch on the **Manuals & Technical Resources** page, under **Software Downloads** and **Software patches**.
2. Download the installation file *CellaVision Software 7.0.1 Patch Version 2.zip* and save it to a USB flash drive or some other portable media.

If the computer has internet access, you can download the installation file directly, without using any portable media.

## Install

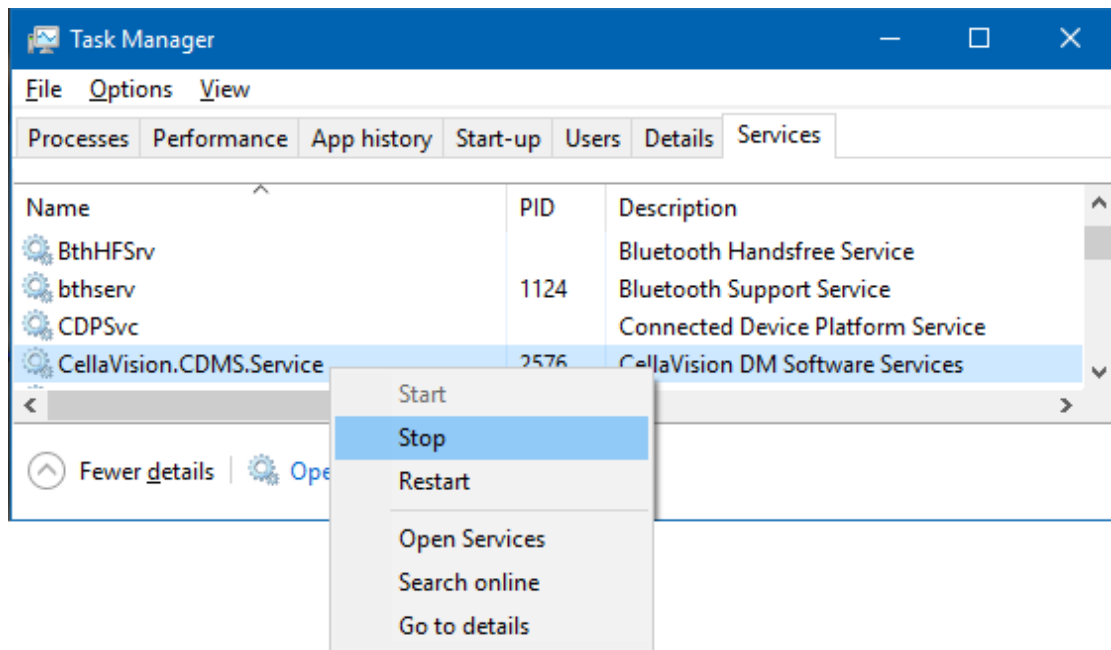
1. Log on to the computer as an administrator.  
To log on as an administrator on a DM system computer, press Ctrl+Alt+Delete, click **Log off**, and then log on to Windows with these credentials:  
User name: administrator  
Password: cv2864400
2. Insert the removable media with the installation file, browse to the removable media, right-click *CellaVision Software 7.0.1 Patch Version 2.zip* and select **Extract All...**
3. In the folder containing the extracted files, double-click *CellaVision Software 7.0.1 Patch Version 2.exe*.
4. If you're prompted for an administrator password or confirmation, type the password or provide confirmation.
5. When you receive the "Do you want to install the CellaVision Software 7.0.1 Patch Version 2?" message, click **Yes**.
6. Wait for the installation to finish. When you see the text **CellaVision Software successfully updated**, click **Finish**.

## Verify Installation

1. Start CellaVision DM Software.  
**Note!** *In some cases, you cannot immediately log on to the database. Please wait a minute and then try again.*
2. On the **Help** menu, click **About**.
3. In the **About** window, make sure that the version information is as follows:  
Version 7.0.1 build 25.  
Source version 102060.

## Troubleshooting

In some cases, the installation of the patch will fail, since the installation program fails to stop *CellaVision.CDMS.Service*. If so, start *Task Manager* then right-click the service and select **Stop**. Stopping the service may take a few minutes. When the service has stopped, try installing the patch again.



**Note!** If you manually stopped the service, it is necessary to start it after the patch has been installed. Start *Task Manager* then right-click the service and select **Start**.